



TOA CORPORATION

CORPORATE PROFILE



HISTORY

The history of TOA CORPORATION stretches back to **1908**, when **Soichiro Asano**, founder of the Asano industrial conglomerate, submitted a bold plan to the Kanagawa prefectural government to reclaim nearly five million square meters of land at the mouth of the Tsurumi River in Yokohama.

With the support of Eiichi Shibusawa and Zenjiro Yasuda, Asano set up the Tsurumi Umetate Kumiai (Tsurumi Reclamation Association) in 1912 as the first step in his grand vision to reclaim part of Tokyo Bay.

About 5,000,000m² of land developed for this project was later developed into the Keihin industrial area which could be said to be the center of Japan's heavy and chemical industries.

The works of TOA began with offshore engineering and later expanded to cover terrestrial engineering. The construction projects and the energy of this growth spread to activities and project overseas as well as Japan.

The Overseas Department (now the International General Headquarters) was established in 1963 and opened Singapore Office at the same time. Since then, TOA began to participate in Asian Market such as Singapore, Indonesia, the Philippines, and Vietnam.

Furthermore, TOA has been carrying out construction and contributing to the sustainable development of the Middle East, Africa, and other areas

In 2020, TOA opened the Bangladesh Office and continues to expand its business in the ever-changing international market.

- 1908 ● Founded
- 1920 ● Established "Tokyo Bay Marine Works Co., Ltd."
- 1963 ● Opened International Division & Singapore Office
- 1967 ● Opened Indonesia Office
- 1987 ● Changed English name from "TOA Harbour Works Co., Ltd." to "TOA CORPORATION"
- 1995 ● Opened Philippine Office
- 1996 ● Opened Vietnam Office
- 2006 ● Opened UAE Office
- 2008 ● Celebrated 100 years Anniversary
- 2013 ● Celebrated 50 years Anniversary of International Division,
Opened Kuwait Office
- 2020 ● Opened Bangladesh Office

THE KEY
FIGURES

50⁺
COUNTRIES

550⁺
PROJECTS

\$10BILLION⁺
OVERSEAS TOTAL TURN OVER



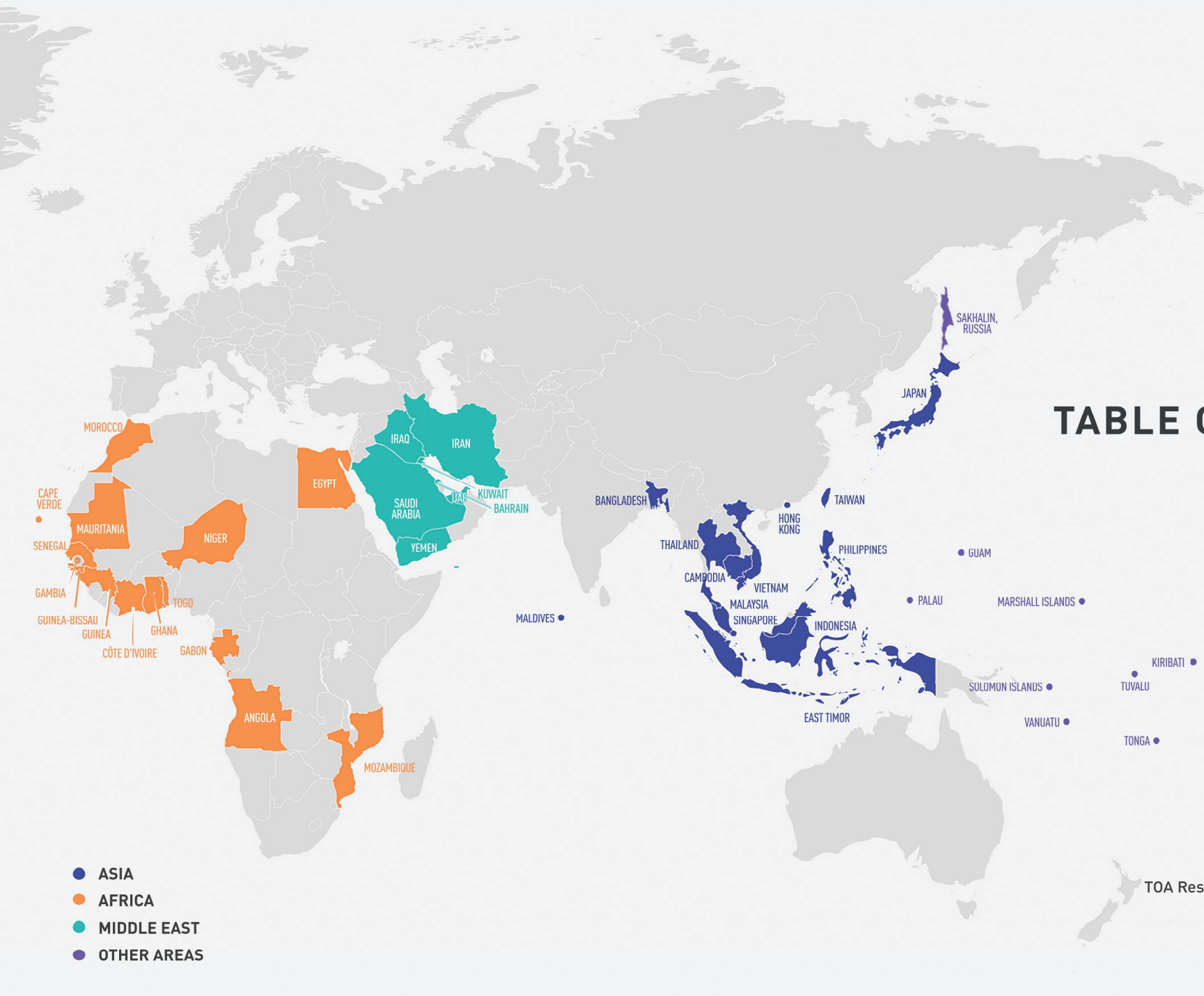


TABLE OF CONTENTS

INTRODUCTION 01

COUNTRIES

Asia 03

Africa 05

Middle East 07

Other Areas 08

MAJOR FIELD OF WORKS

Port and Harbor 09

Container Terminal 11

Reclamation, Dredging, and Soil Improvement 13

Bridge and Waterway 15

Building 17

Cold Storage and Warehouse 19

Plant Facilities 20

TECHNOLOGY

TOA Research and Development Center 21

Equipment 22

TOA 2030 23

ESG INITIATIVES 24

- ASIA
- AFRICA
- MIDDLE EAST
- OTHER AREAS

ASIA

TOA continues to share its well-known experience in construction and contribute to the sustainable development of the Asian Countries, not only to the countries with notable experiences, but as well as to the first-time countries in Asia. Moreover, in 2020, TOA opened the Bangladesh Office and has been engaged in some remarkable projects.

BY THE NUMBERS

SINCE
1963

340⁺
PROJECTS

14⁺
COUNTRIES

Shaping the future with our well-known construction experience and high-level technology.

Singapore



2009

Pasir Panjang Terminal,
Phase II Container Terminal
PSA CORPORATION LIMITED

Photo courtesy of the PSA CORPORATION LIMITED

Philippines



2008

Agno River Flood Control Project, Phase II
DEPARTMENT OF PUBLIC WORKS AND HIGHWAYS



2019

Bali Theater Hall
MINISTRY OF PUBLIC WORKS,
SPATIAL PLANNING SECTION OF
BADUNG DISTRICT, BALI PROVINCE

Indonesia

Experience rich variety of cultures in our global engineering standards.

A multipurpose theater facility project with three floors above ground and one floor below ground. This mega project, designed to accommodate 2,300 spectators, was constructed with a modern and international standard concept yet keeping a traditional vibe to blend with the local environment.

Vietnam



2013

Port Facilities and Buildings for Cai Mep International Container Terminal

PROJECT MANAGEMENT UNIT NO. 85,
MINISTRY OF TRANSPORT, SOCIALIST
REPUBLIC OF VIETNAM

Two new terminals and relevant facilities were constructed to improve the capacity of the cargo transportation in order to handle the increasing cargo demand, thereby contributing to the economic development of Southern Vietnam.

AFRICA

In Africa, TOA's major type of project executed was a port and harbor, mainly on fishing port facilities. Contribution to the long-term and economical growth of African countries is one of the company commitments and will continue to share its established construction experiences.

BY THE NUMBERS

SINCE
1977

41⁺
PROJECTS

15⁺
COUNTRIES

Angola

2019

The Project for Improvement of Namibe Port

INSTITUTE OF MARITIME AND PORTS OF ANGOLA,
MINISTRY OF TRANSPORT

A gateway for import
and export of goods



Côte d'Ivoire

2022

The Abidjan Port Cereal Berth

PORT AUTONOME D'ABIDJAN (PAA),
MINISTÈRE DES TRANSPORTS

The works consist of 9Ha of dredging and reclamation, 1,000m quay wall, and harbor master building to increase cargo handling capacity of the port.

Togo

2019

Improvement of Fishing Port in Lomé

MINISTRY OF AGRICULTURE
LIVESTOCK AND HYDRAULIC

The existing fishing port relocated to the state-owned land neighboring the current Lomé Port, and new facilities were constructed to restore the fishing port functions.

Mozambique

2021

Nacala Port Development Project Phase I/II

MINISTRY OF TRANSPORT AND COMMUNICATION

A port development project in Nacala, located in the northern coast of Mozambique. This project includes container wharf designed to receive a large volume of container shipment and construction of yard area capable of handling containers.

Ghana

2018

Fisheries Promotion in Sekondi

GHANA PORTS AND HARBORS AUTHORITY

This Project aims to expand the port capacity at Sekondi to meet the demand of port usage. It is expected to contribute to the advancement in coastal fishery of Sekondi.

MIDDLE EAST

Middle East is also one of the areas where TOA has been and always competitive in terms of construction activities. Remarkable and major type of works which TOA carried out in the Middle East were Port and Harbor, Dredging, and Reclamation Works.

Kuwait

2020

Maritime Traffic Coordination Center (MTCC)

US ARMY CORPS OF ENGINEERS,
MIDDLE EAST DISTRICT

A Design-Build Project awarded to TOA in the year 2015. The Maritime Traffic Coordination Center (MTCC) is an aid to navigation. MTCC has the similar function as a lighthouse and serves to provide navigational assistance and security to ships.

The main works of this project were the design and construction of a fixed offshore platform, docking space, a lighthouse, accommodations and communication system.



United Arab Emirates

BY THE NUMBERS

SINCE
1973

124⁺
PROJECTS

7⁺
COUNTRIES

2008

The World Project

NAKHEEL - VAN OORD GULF FZE

The World Project is located just off the coast of Dubai and comprised of 300 man-made islands, shaped to form the continents. This incredible development adds over 232km of new beachfront to Dubai's coastline, offering astute investors unprecedented opportunities in the form of leisure, residential and tourist developments.



Solomon

COUNTRIES | OTHER AREAS 08

OTHER AREAS

Aside from the aforementioned areas, TOA also executed and contributed to the sustainable development of countries in the Caribbean, Oceania, Latin America, and others.

2016

Improvement of Honiara Port Facilities

MINISTRY OF INFRASTRUCTURE DEVELOPMENT,
SOLOMON ISLANDS GOVERNMENT



Palau

2020

Palau Waste Disposal Site

MINISTRY OF PUBLIC INFRASTRUCTURE,
INDUSTRIES AND COMMERCE, REPUBLIC OF PALAU



Mexico

2011

Manzanillo LNG Terminal Project

TERMINAL KMS DE GNL

BY THE
NUMBERS

SINCE

1988

47⁺

PROJECTS

17⁺

COUNTRIES

MAJOR FIELD OF WORKS

PORT AND HARBOR

2020 | VIETNAM

Lach Huyen Port Infrastructure Construction Project Package 10

MPMU II VINAMARINE MINISTRY OF TRANSPORT

The total length of the breakwater is about 10km that consists of outer revetment and sand protection dyke.



2015 | INDONESIA

Tarakan New Shipyard

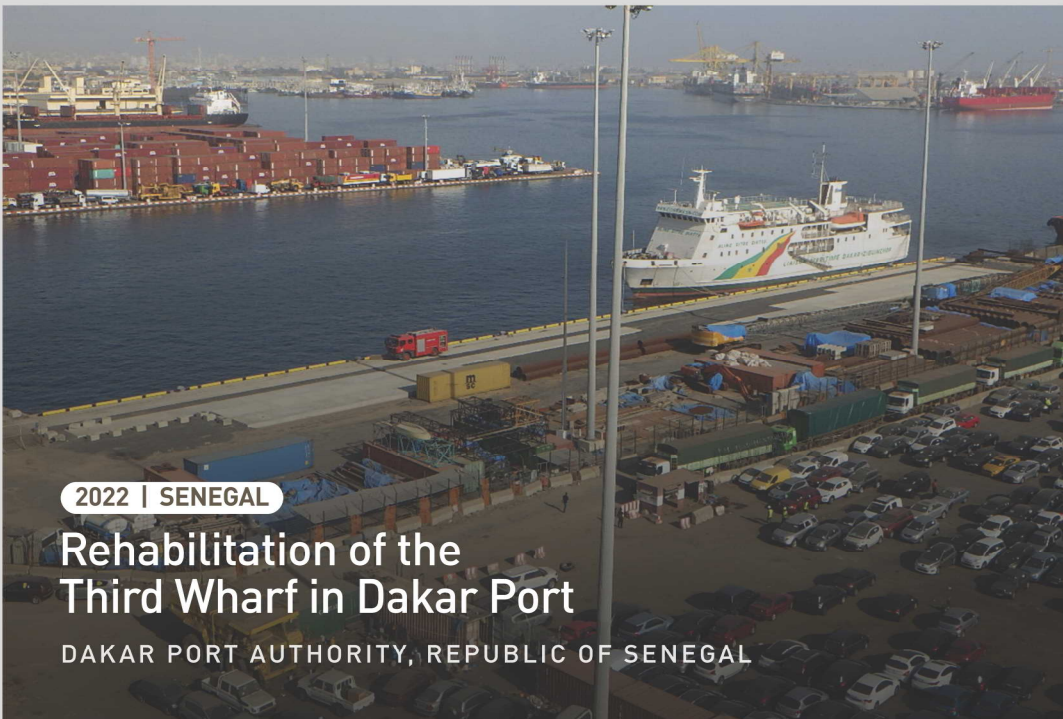
PT KAYAN MARINE SHIP YARD /
PT CIPTA UTAMA



2018 | TONGA

Upgrading of Wharf for Domestic Transport

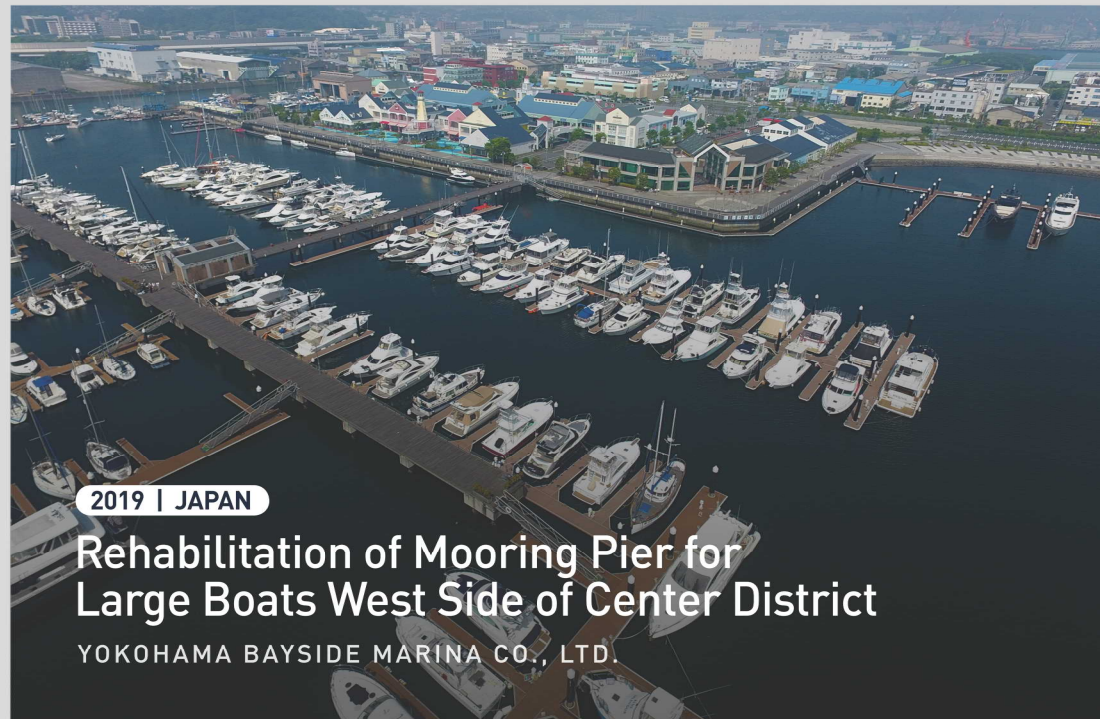
MINISTRY OF INFRASTRUCTURE AND TOURISM, KINGDOM OF TONGA



2022 | SENEGAL

Rehabilitation of the Third Wharf in Dakar Port

DAKAR PORT AUTHORITY, REPUBLIC OF SENEGAL



2019 | JAPAN

Rehabilitation of Mooring Pier for Large Boats West Side of Center District

YOKOHAMA BAYSIDE MARINA CO., LTD.

CONTAINER TERMINAL

2017 | SINGAPORE

Pasir Panjang Terminal, Phase III & IV Container Terminal

PSA CORPORATION LIMITED

Singapore is one of the largest container handlers in the world and the volume are increasing day by day.

TOA CORPORATION built 12 of 15 berths in the Pasir Panjang Terminal, as well as a container yard having an area of approximately 160ha.

2015 | UNITED ARAB EMIRATES

T3-Q10 Container Terminal (Jebel Ali) - Marine/Civil Package

DP WORLD UAE REGION FZE

The design and construction of container terminal that includes an about 75ha container yard behind berth, building, and MEP (Mechanical, Electrical, & Plumbing) works.



2009 | PHILIPPINES

Subic Bay Port

SUBIC BAY METROPOLITAN AUTHORITY



2018 | VANUATU

The Port Vila Lapetasi International Multi-Purpose Wharf Development Project

MINISTRY OF INFRASTRUCTURE AND PUBLIC UTILITIES,
GOVERNMENT OF THE REPUBLIC OF VANUATU

RECLAMATION, DREDGING, AND SOIL IMPROVEMENT



2015 | SINGAPORE

Reclamation of Pulau Tekong

HOUSING & DEVELOPMENT BOARD (HDB) OF
THE GOVERNMENT OF THE REPUBLIC OF THE SINGAPORE

Soil improvement work by Solidification Treatment, and CDM* was carried out for the first time in Singapore.

**Cement Deep Mixing: Improvement for soft ground by injecting slurried cement into soft soil while stirring and mixing.*

2002 | PHILIPPINES

Cebu South Coastal Road

DEPARTMENT OF PUBLIC WORKS AND HIGHWAYS

The reclamation work (300Ha), a bank with a rubble revetment and an asphalt road with three lanes on each side of about 5km was constructed.



1998 | SINGAPORE

Pulau Semakau Offshore Landfill Project

MINISTRY OF THE ENVIRONMENT, SINGAPORE

Embankment 7.6km around Semakau and pier 580m. The facility for receiving about 30 years' worth of garbage discharged from the main island of Singapore. Transplantation of the native mangrove that lived in the landfill over 13ha.

BRIDGE AND WATERWAY

2007 | PHILIPPINES

Second Magsaysay Bridge and Butuan City Bypass Road

DEPARTMENT OF PUBLIC WORKS AND HIGHWAYS

A new traffic route has been delivered to the Butuan City located in the north part of Mindanao Island. A cable-stayed bridge and access bridge with a total length of 882m will cross over the Agusan River connecting to an 8km long bypass road. The project also included the construction of a 1.3km long access road.



2013 | INDONESIA

Denpasar Sewerage Development Project

THE DIRECTORATE GENERAL OF URBAN AND RURAL DEVELOPMENT,
MINISTRY OF SETTLEMENTS AND REGIONAL INFRASTRUCTURE



2018 | JAPAN

Yoshino River Bridge

WEST NIPPON EXPRESSWAY
COMPANY LIMITED

Steel Pipe Sheet Pile (SPSP) Well Method was adopted for the substructural works for the bridge.



2019 | JAPAN

Enhancement of Shibakawa Floodgate

MINISTRY OF LAND, INFRASTRUCTURE,
TRANSPORT AND TOURISM

The Shibakawa Floodgate, which is a double-sluice gate type floodgate, was installed for the purpose of preventing floodwater from flowing back.



2021 | CAMBODIA

Flood Protection and Drainage Improvement

PHNOM PENH CAPITAL ADMINISTRATION,
KINGDOM OF CAMBODIA

This project increases capacity of rainwater pipe buried under an existing road in order to reduce flood inundation time and inundation area caused by a flood. The new rainwater pipe will be laid expanding 13km, and underground water tank & pump station will be constructed along the river.

BUILDING

PORT FACILITY BUILDING 2018 | TONGA

Upgrading of Wharf for Domestic Transport

MINISTRY OF INFRASTRUCTURE
AND TOURISM, KINGDOM OF TONGA

A **3-storey Passenger Terminal Building** and a **New Wharf** was constructed in the western sea area of the existing Fuaa Wharf in Tonga. The construction of the 3-storey Passenger Terminal Building with a total floor area of about 2,800m².

This project aims to improve handling efficiency to ensure the safety of the Nuku'alofa Port through separating domestic and international cargoes.





2005 | SINGAPORE HARBOR FACILITY BUILDING

Marina South Clifford Pier Terminal

THE HOUSING AND DEVELOPMENT BOARD

This Marina South Clifford Pier Terminal is the ferry terminal building at Marina South Pier for ferries and small boats.



GENERAL BUILDING 2019 | INDONESIA

Bali Theater Hall

MINISTRY OF PUBLIC WORKS, SPATIAL PLANNING
SECTION OF BADUNG DISTRICT, BALI PROVINCE

The Bali Theater Hall has become a new symbol of the revitalization of this region.



RESORT VILLA 2017 | VIETNAM

KN Lotus Cam Ranh Resort

KN CAM RANH COMPANY LIMITED

41 buildings in total adjacent to resort hotel golf course

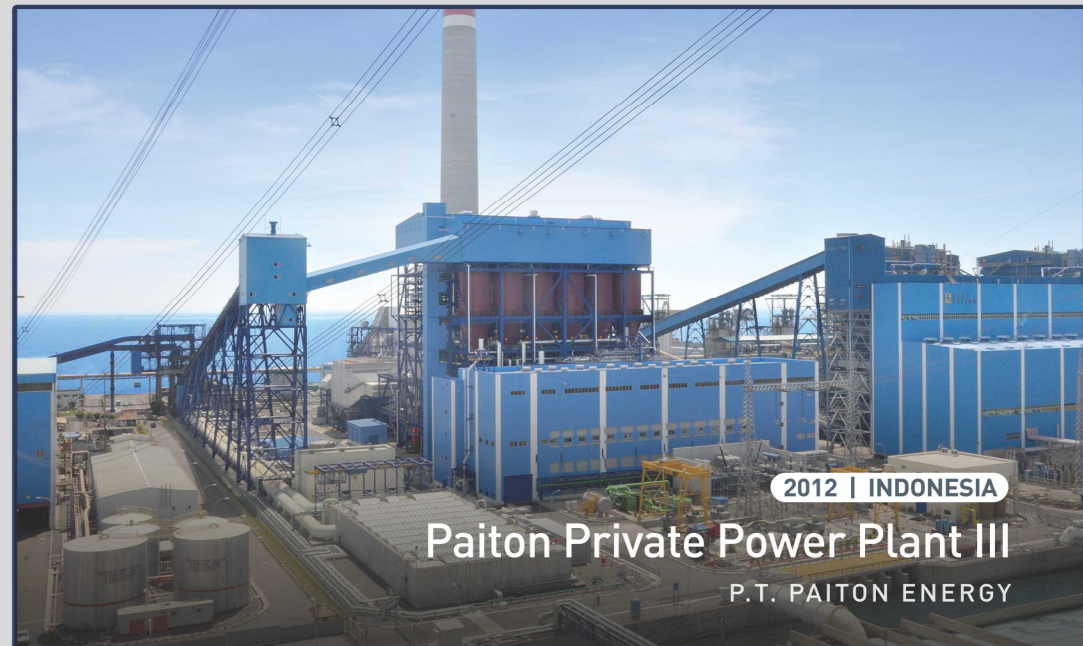
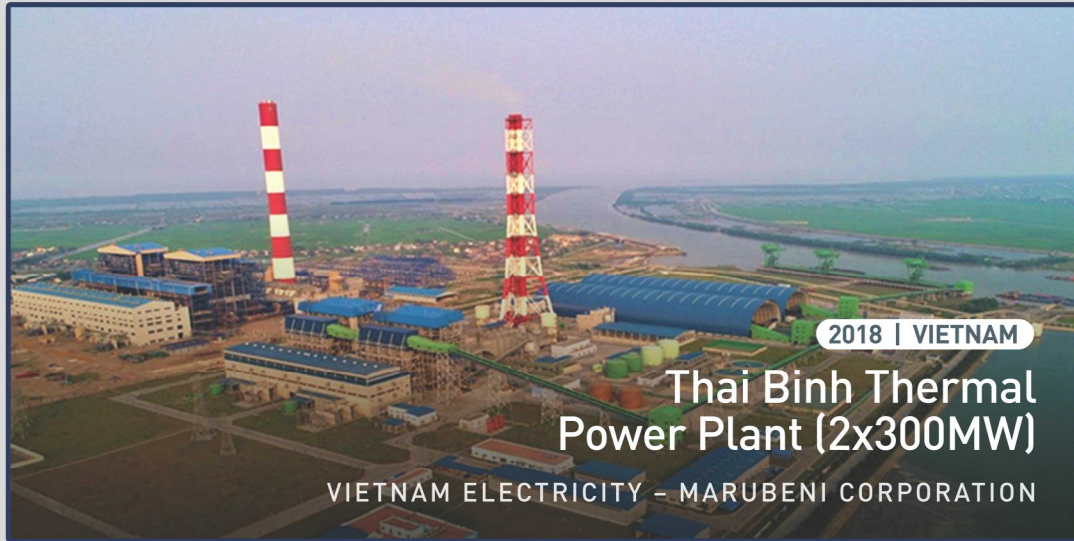
COLD STORAGE AND WAREHOUSE

The construction of a number of cold storage and warehouses, both in Japan as well as overseas, and it is a field where the Company has great expertise.



PLANT FACILITIES

TOA has been carrying out the construction of various plant facilities for more than 20 years. TOA's integrity and technological expertise in this area of construction was developed by decades of actual construction experiences.



Developing “Technologies with a Vision for the Future”

TRDC TOA RESEARCH AND DEVELOPMENT CENTER

We believe that the mission of TOA CORPORATION is to respond to the needs of society, which change with the times, and contribute continuously and appropriately to society as a construction company.

TRDC truly shoulders the responsibility of being “the foundation of TOA’s technology.” We will effectively activate the research and development capabilities, know-how, and skills we have accumulated from the past to today, and thoroughly grasp the ever-changing needs to determine the direction our research and development will take.



RECLAMATION AND DREDGING VESSEL

KAISHUU

16500m³ Class Trailer
Suction Hopper Dredger

The Dredging material can be dumped through bottom doors, rainbowed directly to the designated location or discharged through a floating pipeline.



PILING BARGE AND FLOATING CRANE

KAKURYU

The **KAKURYU** has a high construction capacity, which can install large diameter and long length piles.

In addition, the crane can turn 360-degrees, enabling construction in narrow areas.

TOA
2030

Build a prosperous society and connect all the people over the world for the better future

With the foundation of high-level technologies and human resources, Toa Corporation aims to be a company that sustains society, connects people with the world, and creates a future.



ESG INITIATIVES



Fulfill social responsibilities related to **E**nvironment, **S**ociety, and **G**overnance, and carry forward ESG Management in order to realize sustainable improvements in corporate value, and thereby contribute to Sustainable Development Goals.

ENVIRONMENT

Realize the sustainable natural environment by reducing the burden on the environment.

- Develop infrastructure for renewable energy (offshore wind power generation)
- Conduct research and development of technologies to preserve and create the marine environment (technologies for preservation and reclamation of tidelands and seaweed beds, which contribute to blue carbon; and separation and collection of microplastics, etc.)
- Conduct research and development of technologies to reduce the generation, as well as the collection of CO₂.
- Contribute to low-carbon society by utilizing timber as recyclable resource (technology for large-scale timber construction, etc.)



SOCIAL

Provide people with “safe life.”

- Promote unmanned operation, saving energy, and streamlining in construction through ICT.
- Develop infrastructure to protect the livelihood of people from disasters.
- Optimize life cycle costs through renewal technologies.
- Develop infrastructure to improve living standards in developing countries.



GOVERNANCE

Make continuous trust with society and employees.

- Realize zero abuse of authority and workplace bullying
- Set up a corporate governance system to restore trust (Continuous initiatives for preventing recurrences)
- Realize zero major violations of laws and regulations
- Realize zero serious public incidents and serious accidents
- Develop attractive working environments through work style reforms
- Develop a climate conducive to lifelong employment for female employees.
- Ensure education and training, and employees with expertise for all age groups.



Head Office / International General Headquarters

3-7-1, Nishi-Shinjuku, Shinjuku-ku, Tokyo, 163-1031 Japan
Tel: +81-3-6367-0801 Fax: +81-3-6367-0809
toa-const.co.jp

OVERSEAS OFFICES

SINGAPORE – Singapore Office

2 Venture Drive, Vision Exchange #19-01/08 Singapore 608526
Tel: +65-6775-5044 Fax: +65-6775-3542

INDONESIA – Indonesia Office

L'AVENUE Office Building, Unit F, 28th Floor, Jl. Raya Pasar
Minggu Kav.16, Pancoran, Jakarta 12780, Indonesia
Tel: +62-21-8066-7181

VIETNAM – Hanoi Office

3rd Floor, Sky City Building, 88 Lang Ha Street, Lang Ha
Ward, Dong Da District, Hanoi, Vietnam
Tel: +84-24-3826-2606 Fax: +84-24-3826-2628

VIETNAM – Ho Chi Minh Office

2nd Floor, VIPD Building, 4 Nguyen Thi Minh Khai Street,
Dakao Ward, District 1, Ho Chi Minh City, Vietnam
Tel: +84-28-3820-1722 Fax: +84-28-3820-1724

OVERSEAS SUBSIDIARIES & AFFILIATES

MALAYSIA – TOA (M) Sdn. Bhd.

Suite 3.21, 3rd Floor, The Ampwalk, 218 Jalan Ampang,
50450 Kuala Lumpur, Malaysia
Tel: +60-3-2161-5909 Fax: +60-3-2161-5908

BANGLADESH – Bangladesh Office

Concord Colosseum 7th Floor, 156, Kemal Ataturk Avenue,
Banani, Dhaka-1213, Bangladesh
Tel: +880-13-1100-1887

UNITED ARAB EMIRATES – Dubai Office

No.239, Sultan Business Center, Oud Metha Dubai,
United Arab Emirates
Tel: +971-4-396-9299 Fax: +971-4-396-8780

KUWAIT – Kuwait Office

PO Box 22220 Safat, 13083, Kuwait

SRI LANKA – Sri Lanka Office

No.182/2, Hulftsdorp Street, Colombo 12, Sri Lanka
Tel: +94-11-232-1633 Fax: +94-11-461-7783

PHILIPPINES – TOA (Phils.), Inc.

26F, U2607 One San Miguel Avenue Condominium, No.1 San Miguel Avenue
cor. Shaw Boulevard, Ortigas Center, Pasig City 1605, Philippines
Tel: +63-2-718-3068 Fax: +63-2-718-3071